



Animal Selection Process

Hafiz Wasi Muhammad Khan

SOLVE
AGRIPAK
(PRIVATE) LIMITED

SOLVE AGRITM
DAIRY INSTITUTE

Sustainability

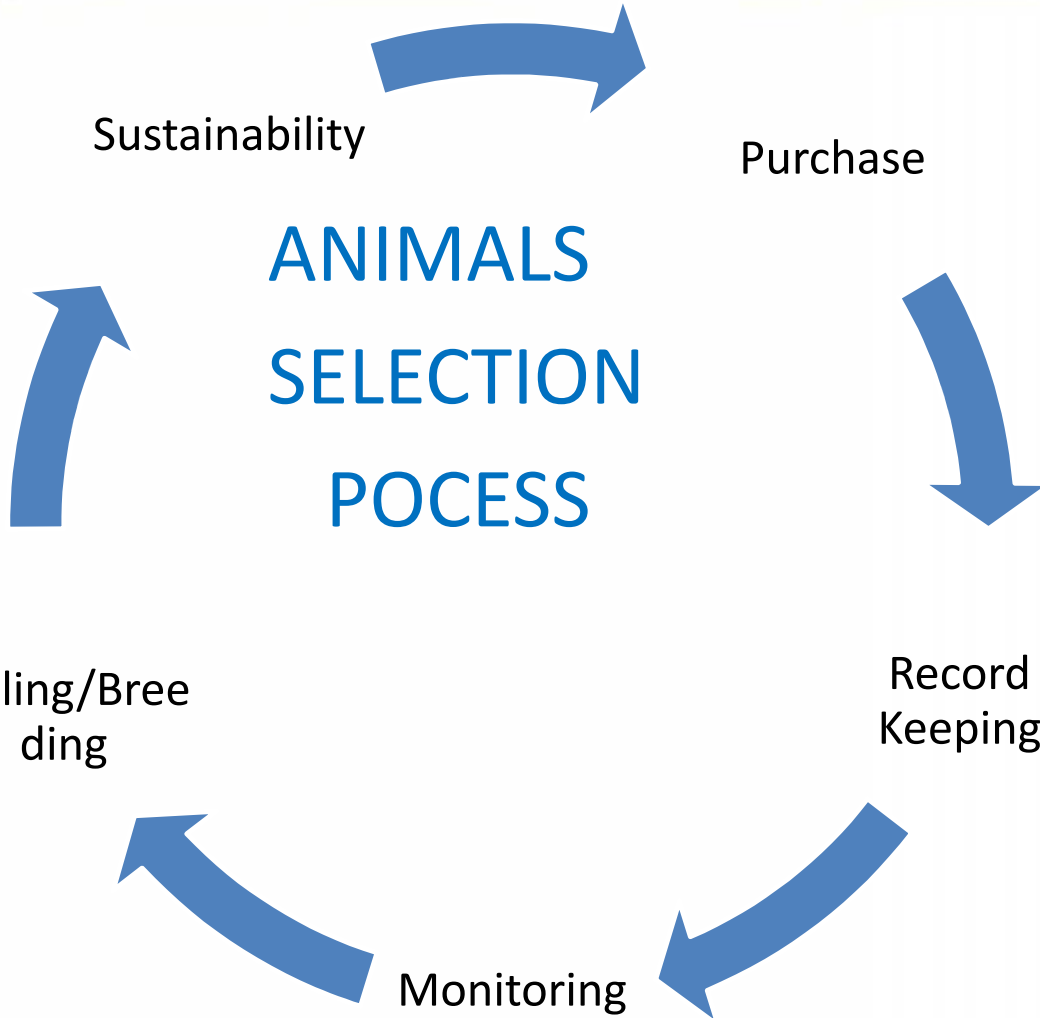
Purchase

ANIMALS
SELECTION
PROCESS

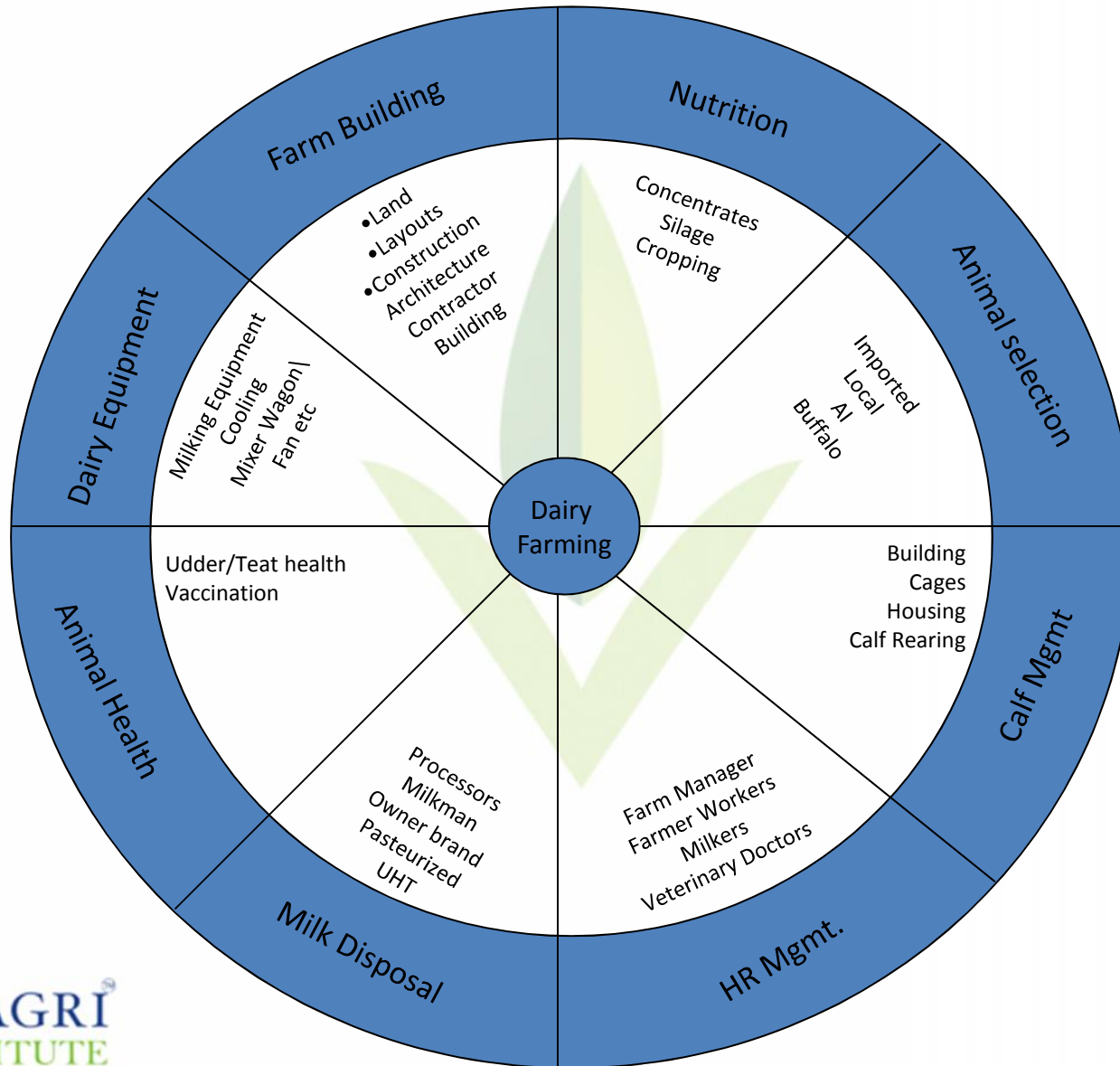
Culling/Breeding

Record Keeping

Monitoring



Dairy Farming



Foundation is Most Important



SELECTION / CULLING

- Selection refers to breeders decision to use of some animals as parents and to cull the rest
- The success is based on breeders decision to identify the superior animals
- Selection is based on economically important heritable traits
- Selection and culling are simultaneous



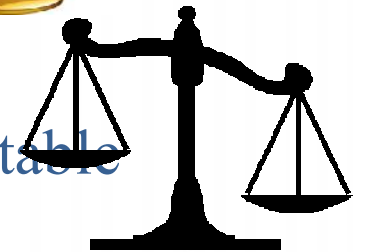
Good

Better

Best

SUSTAINABILITY/ VIABILITY

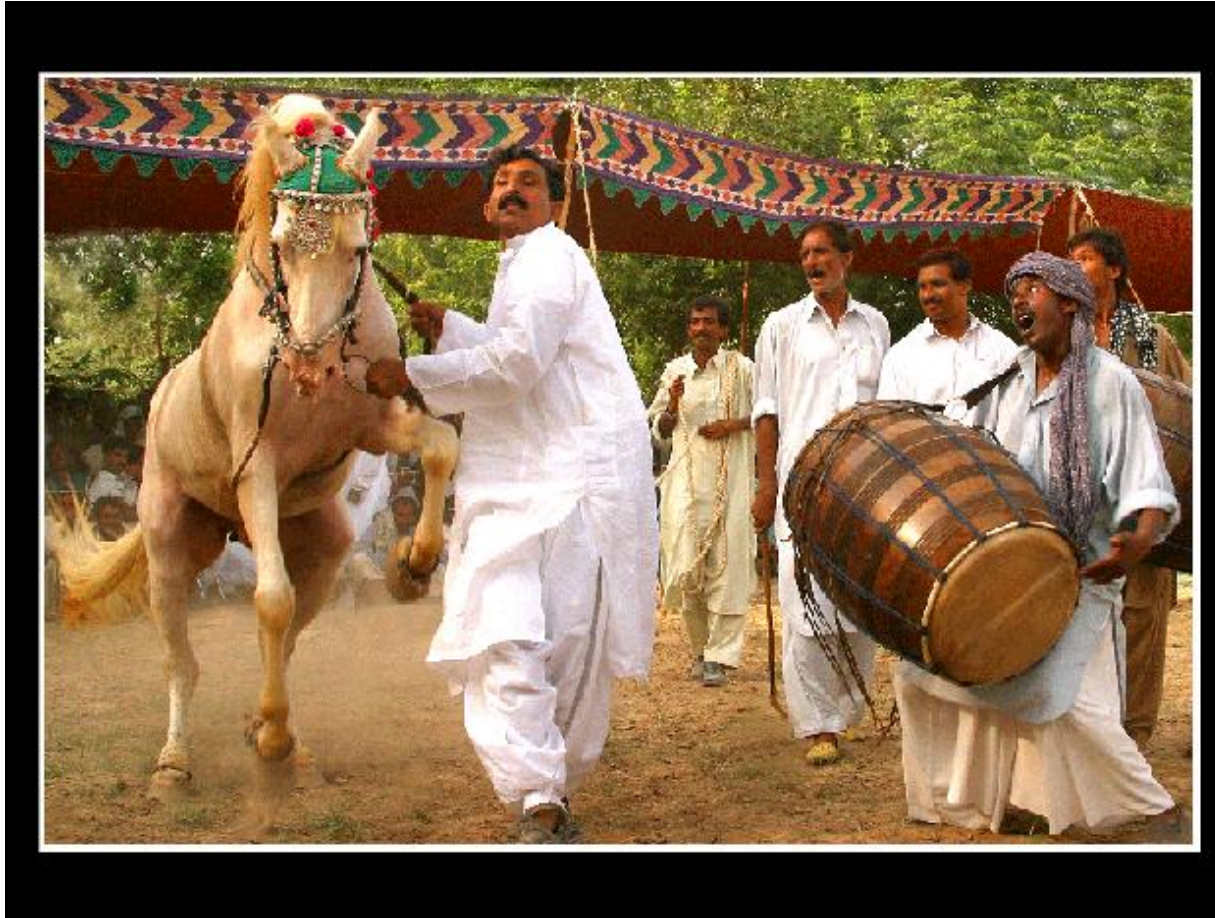
- Inputs generate expenses
- Outputs generate revenue
- Higher inputs/Lower output = Not Sustainable
- Equal Inputs/equal Outputs = Break Even + Hope
- Less Inputs/More Outputs = Sustainable/Viable/Profitable



SELECTION/CULLING/REJECTION

- The basic component of any livestock project is ANIMALS
- All expenses on other components are aimed only to provide comfort to the animals maximizing their production in return making the project profitable
- For a viable project their potential must keep on increasing
- Productive animals in the project will make and non productive animals will break the project
- Selection and culling must be simultaneous
- Selection and Culling is always based on certain traits

DANCING HORSES



پاکستان کے زرعی شعبے

Milk AND MEAT Production

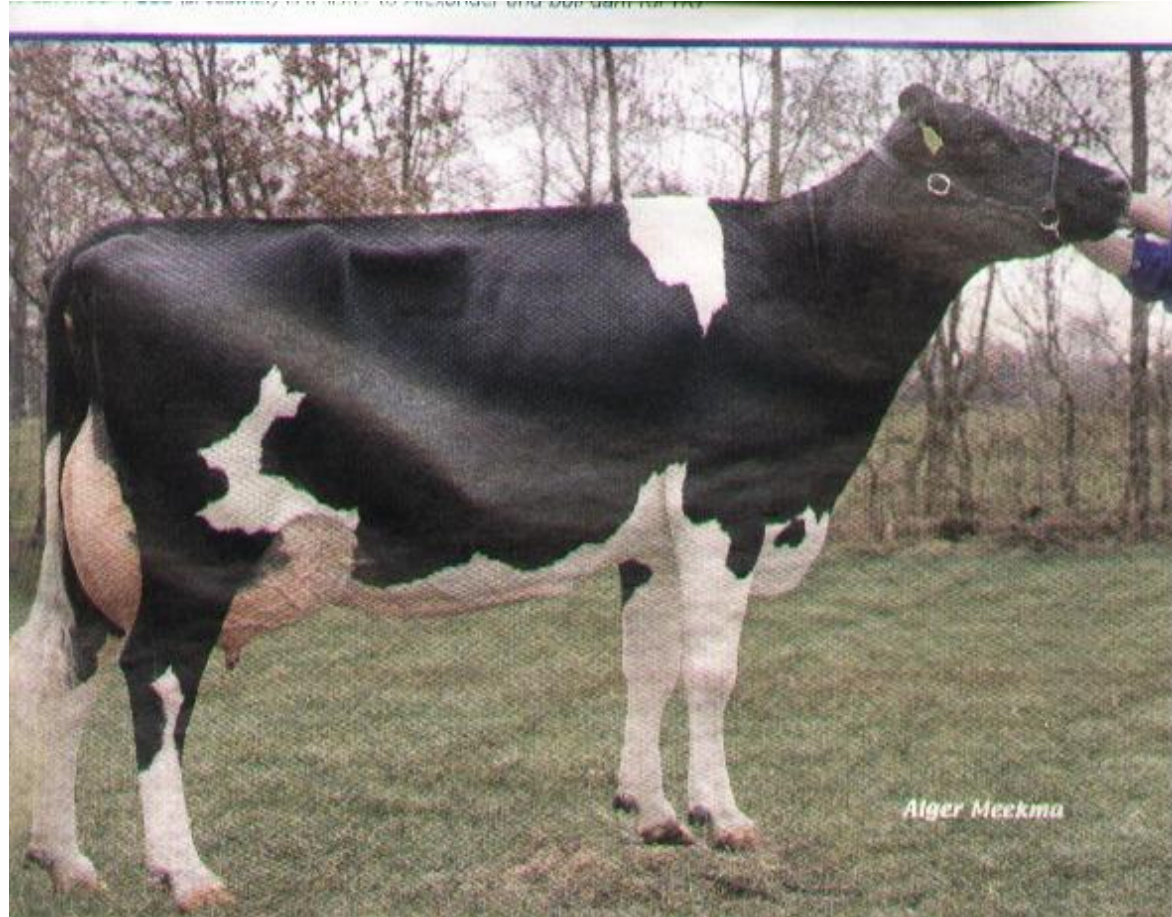


SOLVE AGRI[®]
DAIRY INSTITUTE



SOLVE AGRI[®]
AGRIPAK

Milking Option



MEAT AND QUALITY MEAT



Breed Trait



Export Market



For Eid Al Azha



Milk Composition Percentage

Constituents	Buffalo	Cattle	Crossbred	Friesian
Fat	7.4	4.5	4.32	3.5
Proteins	3.8	3.3	3.2	3.1
SNF	9.4	8.8	8.5	8.7
Total Solids	16.8	13.3	12.8	12.2

Financial Security



SELF ASSESSMENT



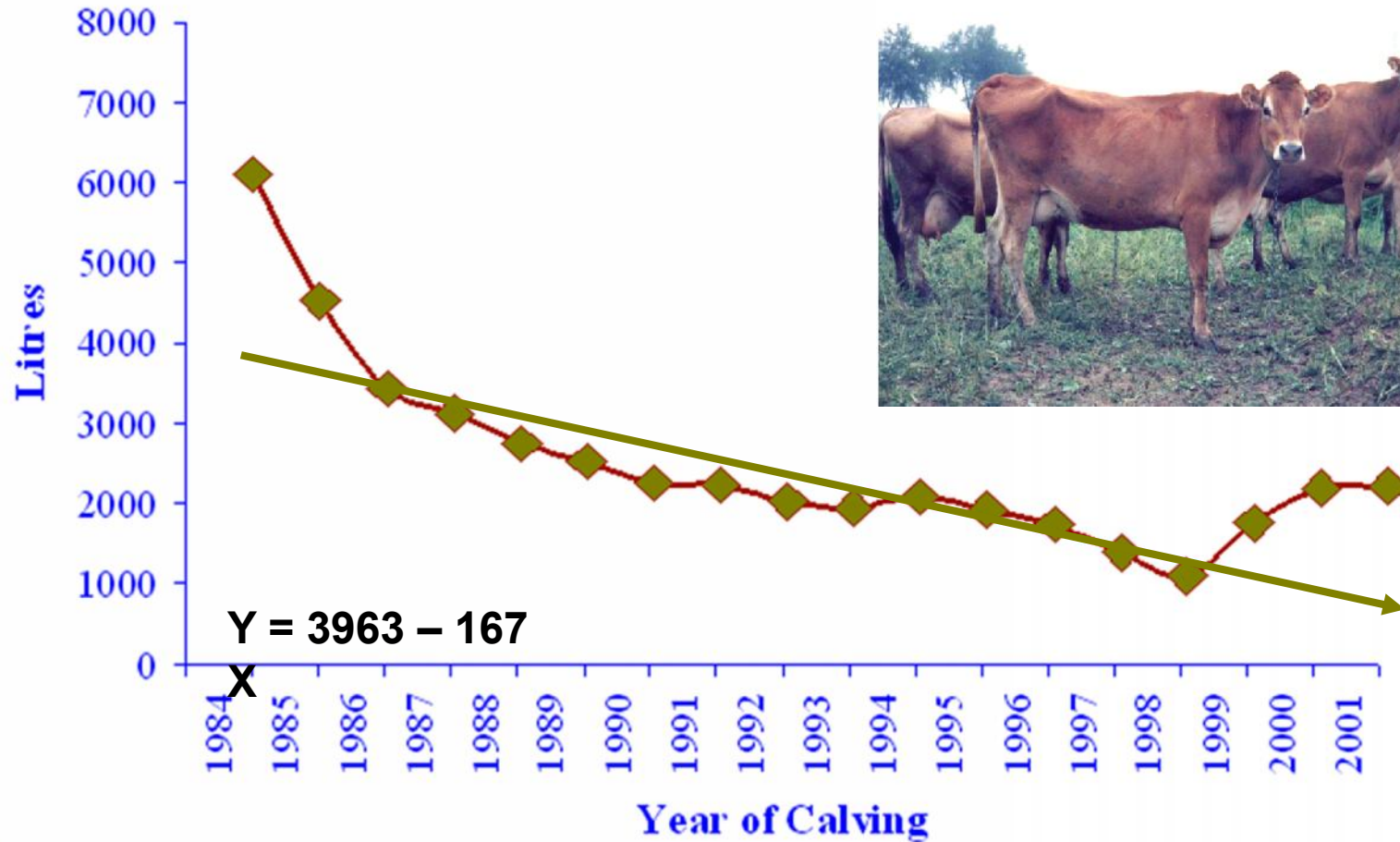
SOLVE AGRI
DAIRY INSTITUTE

SOLVE[®]
AGRIPAK

History of Performance

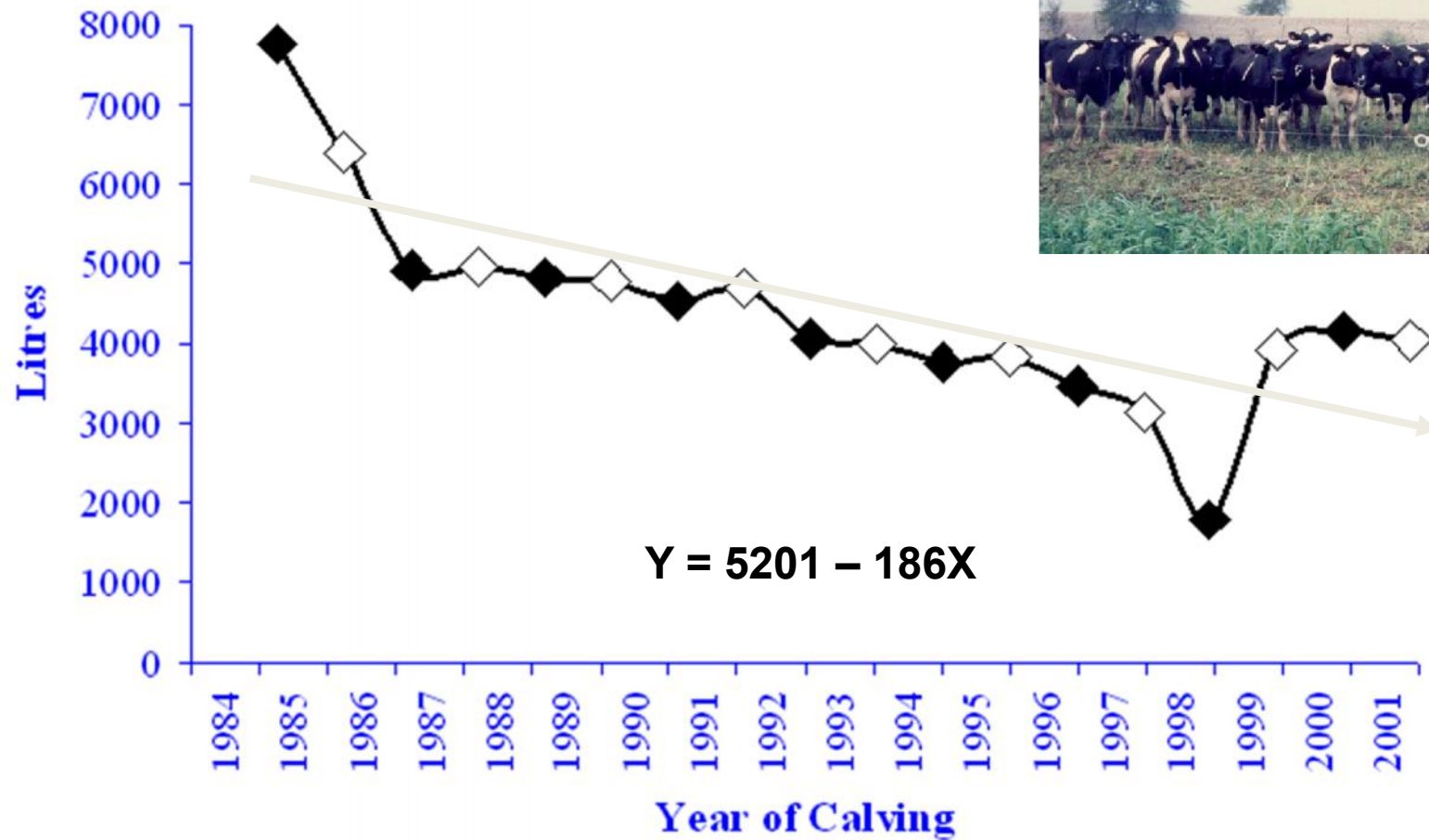
- Tuzk e Babri 20 liter/head
- Pre partition 15liter/head
- Post Independence 12 liter
- Economic survey 2006
 - Cattle 6.1liter/head
 - Buffalo 6.9liters/head

Lactation Yield of Jersey



Performance of Exotic Breeds at Pattoki Farm

Lactation Yield in Holstein



FARM N FARMER



INTERESTED ONLY IN MULTIPLICATION



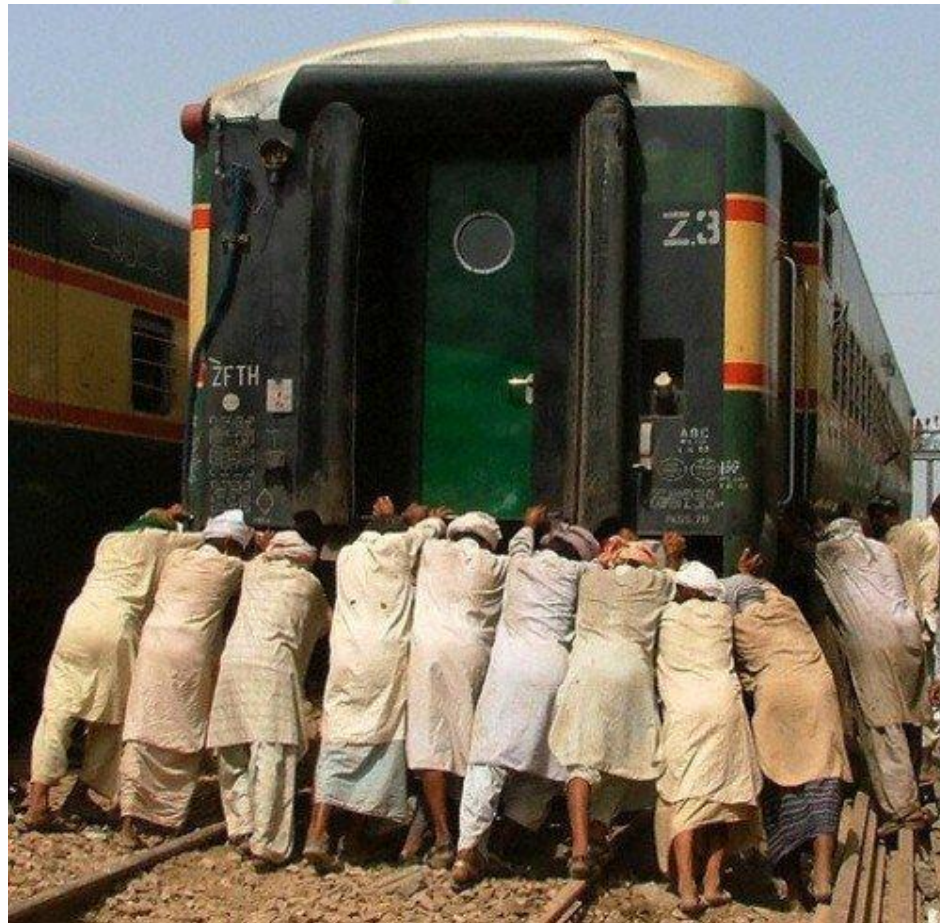
Bache Do hi Acche



Yeh sark kahin nahi Jaati



RESULTS VS VISION



INEVITABLE RESULT



WAY FORWARD



BORN TO BE ALIVE

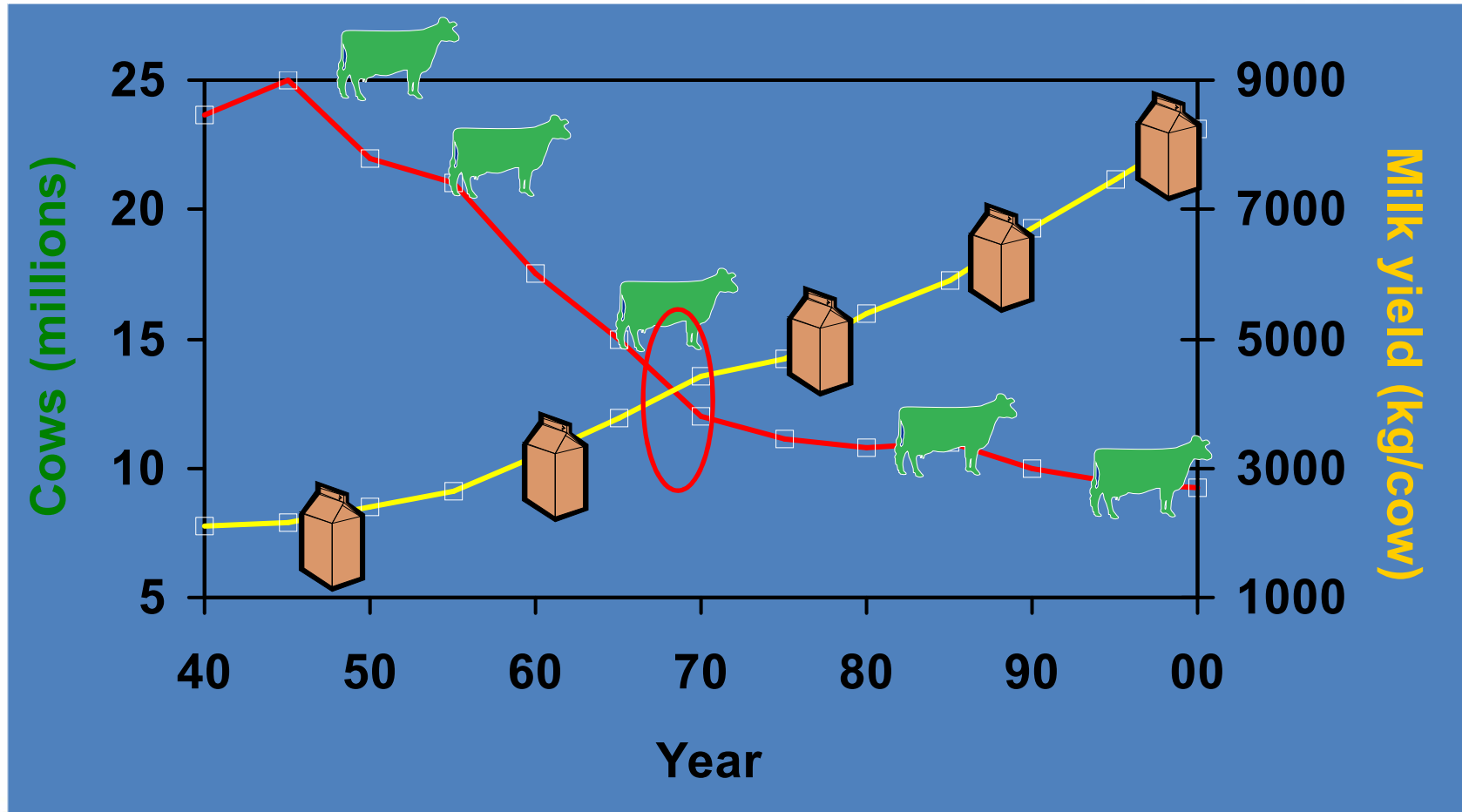


SOLVE AGRI[®]
DAIRY INSTITUTE

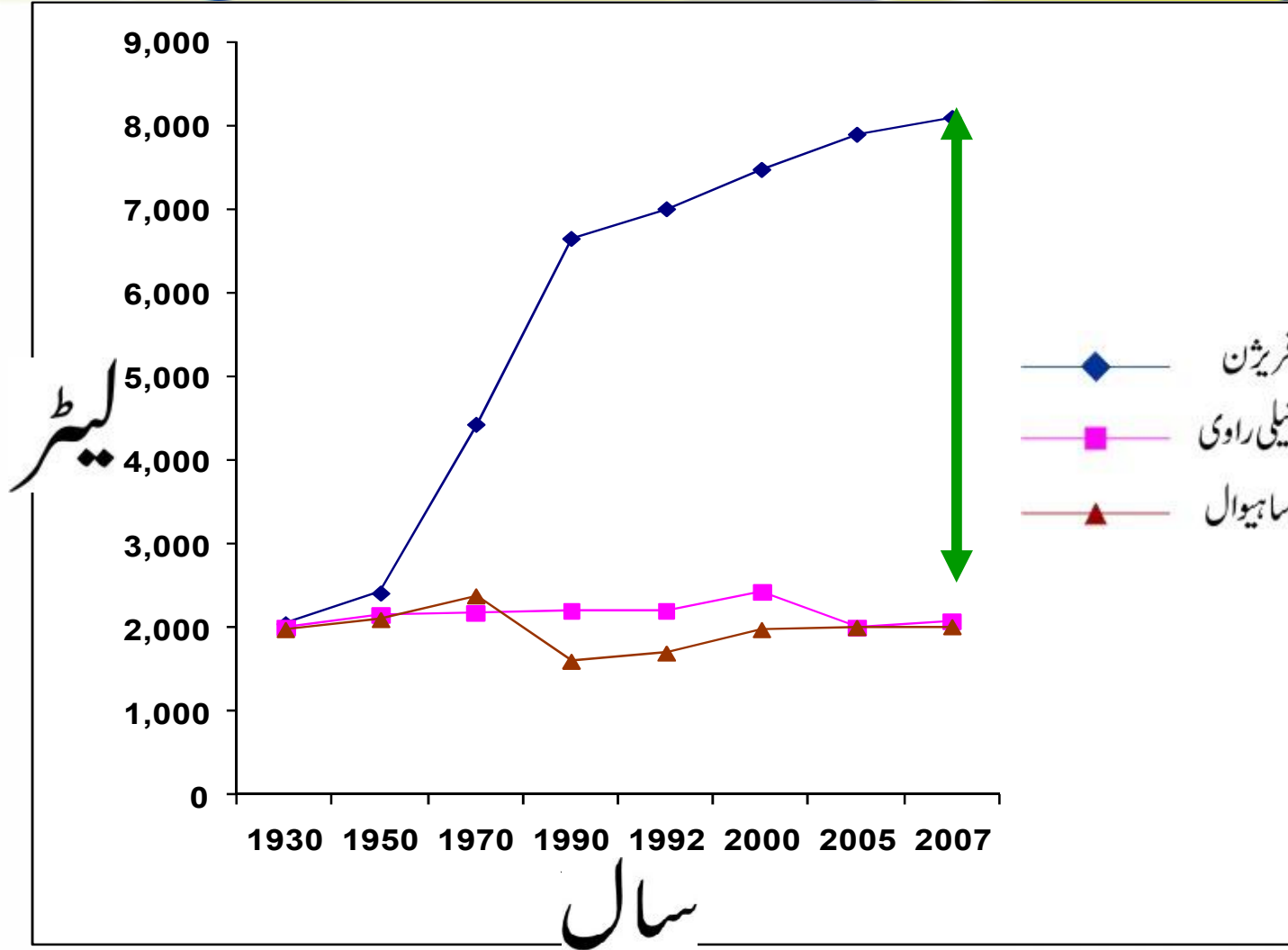
SOLVE
AGRIPAK[®]



Dairy population trend in the world

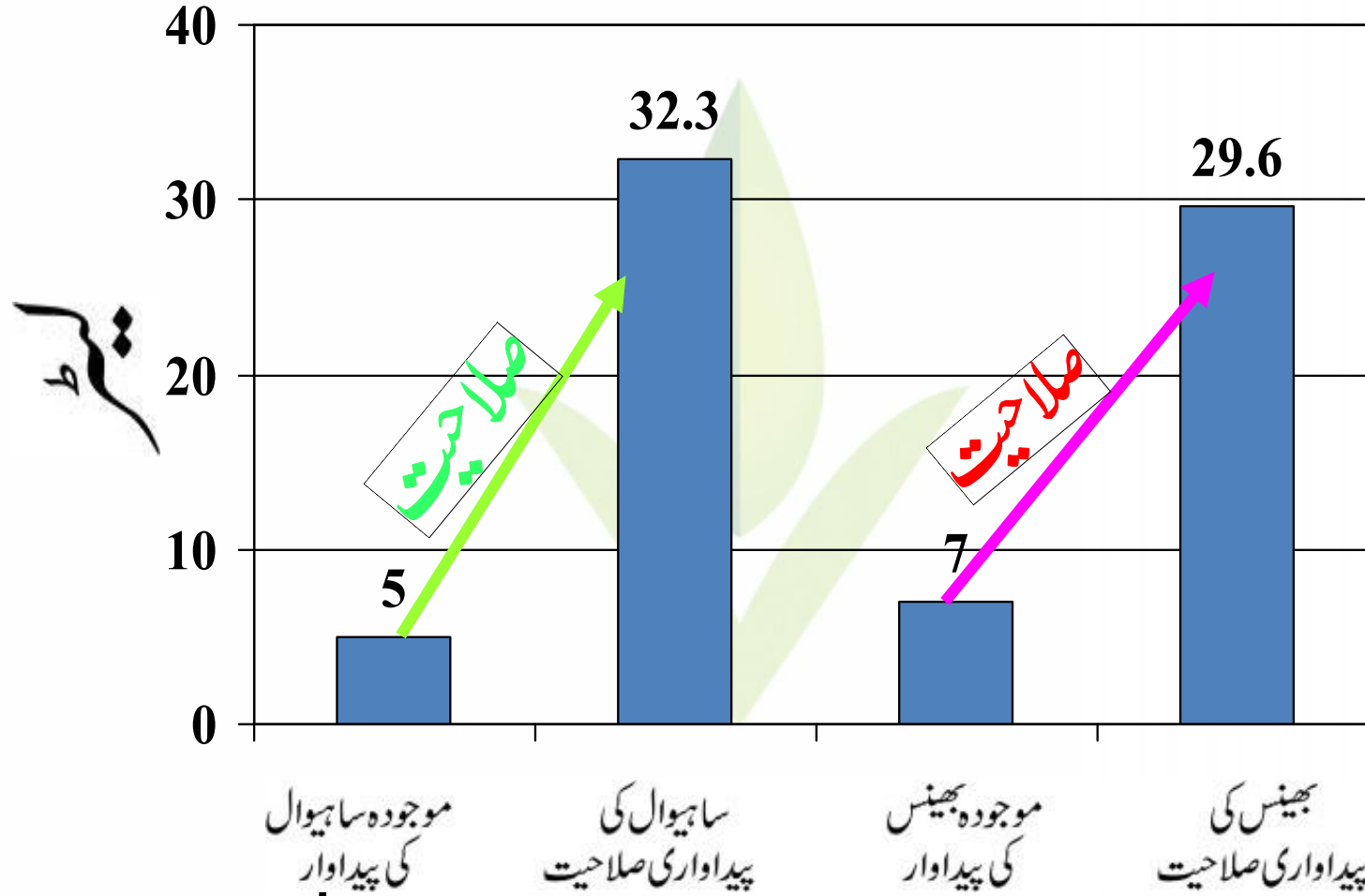


مخلوط انسانی کے جینیاتی مواقع



UVAS 2008

موجودہ نسلوں کے دو ذیلی جانوروں میں یومیہ پیداواری صلاحیت



Constraints in Viable Animal Selection

- Livestock sector is predominantly dominated by poor farmers having 2-5 heads/family
- Due to poor cash flow the stake holders have limited options necessary for animal selection
- Cumbersome process of loaning system for such farmers (Every one talks of training not FCB)
- Weak Institutional commitment in public sector
- Inconsistent policy of the Institutions
- Weaker Breeding Societies

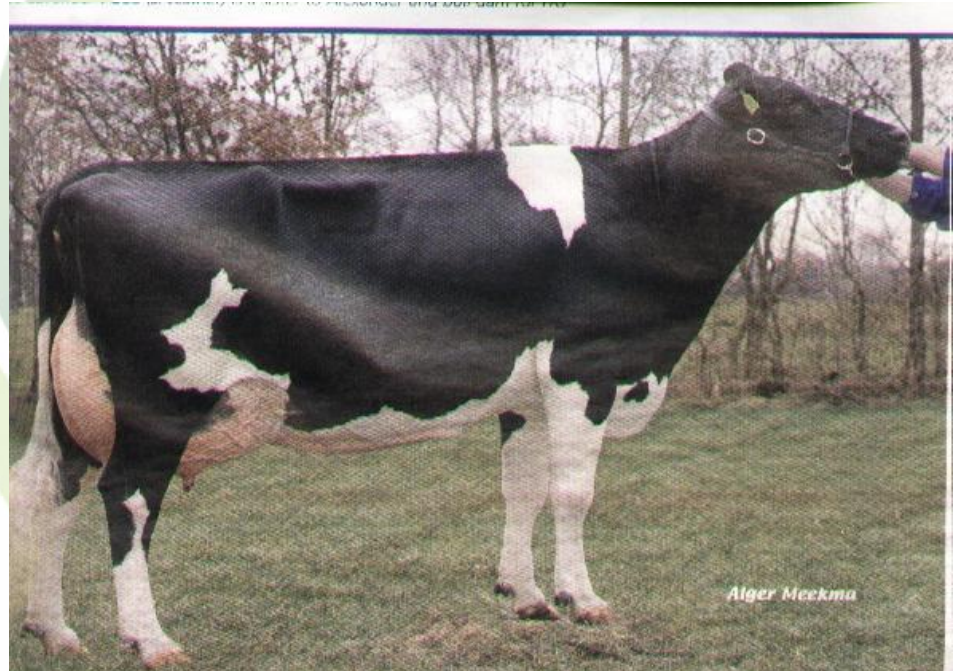


CONTI___

- No Gene Pools from where farmers can get/purchase replacement of standard traits
- Non availability of PROGENY TESTED BULLS
- Inadequate/Ineffective Legislation in import of PTB semen import

Model Cow

- 20 liter daily milk production
- Regular Calver
- 5000 liters milk/lactation
- Adaptive to any climatic change





Sources Of Dairy Animal Selection

- From dairy farmers who practice proper record keeping
- From registered livestock breeders
- Through reputed dairy animals suppliers
- From animal markets(Mandis)
- Import of exotic animals

Criteria for selection in your own herd

- To keep and maintain a productive herd following guide lines must be observed
- Proper record keeping of herd
- Maintain young stock up to 4th lactation
- Per/day milk yield should not be less than 20 liters
- Per lactation yield should not be less than 5000 liters
- Should be efficient in feed milk conversion ratio
- Body scoring and udder should be impressive
- Calving interval should be minimum
- Must be adoptive to climatic conditions & resistant to diseases especially mastitis

ANIMAL SELECTION THROUGH BREEDING



God Forgives But I Don't



SOLVE AGRI
DAIRY INSTITUTE

SOLVE
AGRIPAK



OPTIONS IN BREEDING MODE SELECTION

- 
- NATURAL BREEDING
 - CROSS BREEDING
 - ET
 - CLONING

MILK TRAIT



Dual Purpose



MEAT TRAIT



SELECTION VIA CROSS BREEDING



ET



SOLVE AGRI[®]
DAIRY INSTITUTE

SOLVE[®]
AGRIPAK

Cloning



FIT AT 90 YEARS



HOPE IN FUTURE





Summery

- Proper animal selection contributes 75 percent share in making dairy farming profitable
- Selection & culling is a constant process for a productive herd
- Record keeping helps in selection & maintaining of productive animals
- Animal selection should be based on current milk production, calving interval, longer lactation period & adoptability

EVERY ONE HAS A RIGHT TO SELECT



SOLVE AGRI
DAIRY INSTITUTE

SOLVE
AGRIPAK

RAAST BAGO GARCHE DOOR AST

